

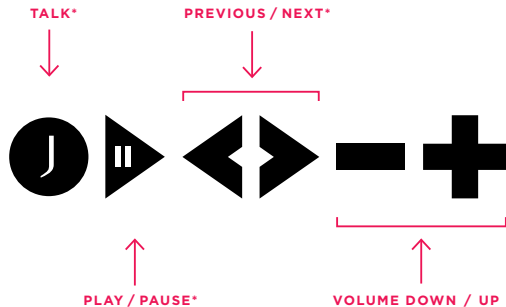
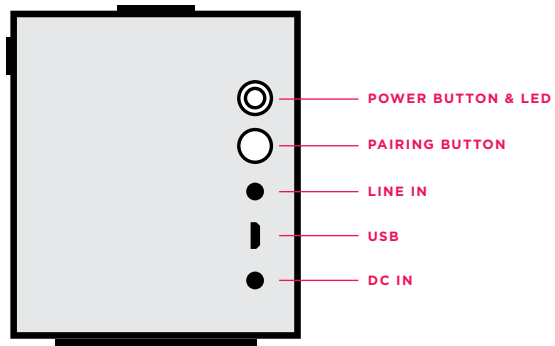
BIG JAMBOX™

by JAWBONE™

QUICK START GUIDE



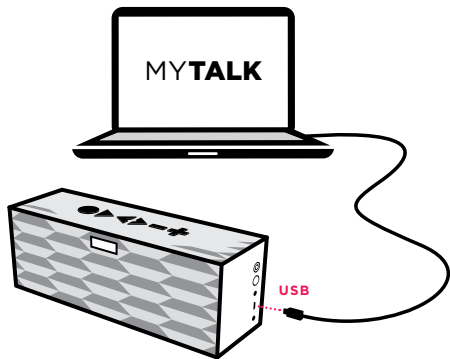
BUTTONS & CONTROLS



* Only works when connected wirelessly via Bluetooth*

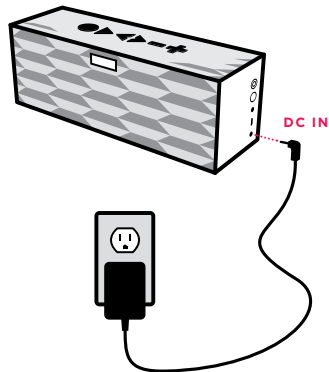
UPDATE AT MYTALK

BIG JAMBOX™ is always improving and gets better with time. Download the latest software, features and apps at **MYTALK.JAWBONE.COM**. Turn BIG JAMBOX™ off before updating.



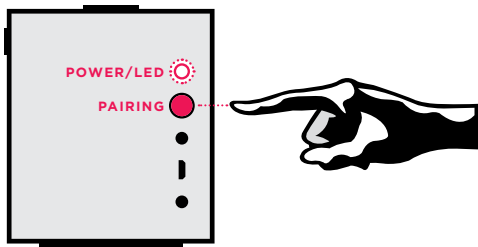
CHARGE IT UP

Plug BIG JAMBOX™ into an outlet using the included wall charger. The LED will turn white when fully charged. Full charge takes about 2.5 hours.



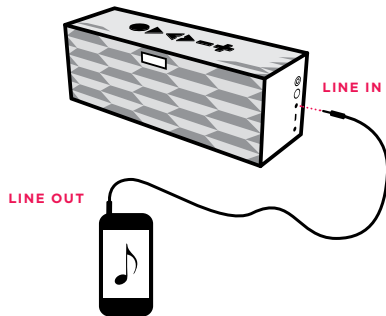
OPTION 1 CONNECT WIRELESSLY

When turned on for the first time, BIG JAMBOX™ will automatically enter pairing mode. To pair, go to Bluetooth® settings on your smartphone, tablet, computer or device and connect to “BIG JAMBOX by Jawbone”. Enter “0000” if asked for a passcode. To enter pairing mode thereafter, hold the pairing button until the LED flashes red & white.



OPTION 2 PLUG & PLAY

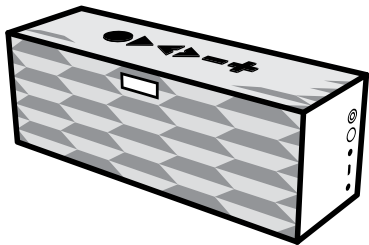
Connect BIG JAMBOX™ to any device with a headphone jack or line out using the included 3.5mm audio cable. Please note, the TALK, PLAY/PAUSE, PREVIOUS & NEXT buttons on BIG JAMBOX only work when connected wirelessly via Bluetooth®.



SPEAKERPHONE

Use BIG JAMBOX™ as a portable speakerphone when connected wirelessly via Bluetooth®. To answer/end a call, press the TALK button. To mute/unmute the built-in microphone, press the PLAY/PAUSE button.

BUILT-IN MICROPHONE



Experience your music like never before — as if you're sitting front row, hearing it live. This breakthrough feature brings incredible depth and rich detail to most stereo audio, especially binaurally recorded or processed content. Turn LiveAudio on/off by holding the PLUS & MINUS buttons. Visit jawbone.com/liveaudio for playlists and more info.



LiveAudio uses BACCH 3D sound technology

CHEAT SHEET

ACTION

GENERAL

ACTION	CONTROL
Power On/Off	Hold POWER button
Power On/Off Without Sound	Hold MINUS button, then hold POWER button
Activate Pairing Mode*	Hold PAIRING button until LED flashes red & white
Re-Connect to Paired Device*	Press TALK button
Turn LiveAudio™ On/Off*	Hold PLUS & MINUS buttons
Hear Battery Status*	Press TALK button
Play Audio Demo*	Hold TALK, PLUS & MINUS buttons

SPEAKERPHONE**

Answer/End Call	Press TALK button
Activate Voicemail/DialApps	Hold TALK button
Switch Between Calls	Press TALK button
End Call & Answer Incoming	Press TALK button 2x
Mute/Unmute Microphone	Press PLAY/PAUSE button
Redial Last Number*	Press TALK button 2x

* Not during a call ** Bluetooth® only

FOR MORE INFORMATION



VISIT [JAWBONE.COM/SUPPORT](https://www.jawbone.com/support)

for more information



GO TO [JAWBONE.COM/WARRANTY](https://www.jawbone.com/warranty)

for warranty info



PURCHASE Jawbone® products and accessories at **[JAWBONE.COM](https://www.jawbone.com)**



FOLLOW us on Facebook® & Twitter®

[JAWBONE.COM/FACEBOOK](https://www.jawbone.com/facebook)



[JAWBONE.COM/TWITTER](https://www.jawbone.com/twitter)

SAFETY INFORMATION

WARNING

Please read these safety warnings and cautions carefully to ensure your personal safety and prevent property damage.

Fire and Electric Shock Hazard

- Do not expose your Jawbone® Speaker to liquid, moisture, humidity, or rain. Do not use the Jawbone® Speaker near a bathtub, sink, sauna, pool, or steam room. Exposure of the Jawbone® Speaker to moisture could result in electric shock.
- Do not drop, disassemble, open, crush, bend, deform, puncture, shred, microwave, incinerate, paint, or insert foreign objects in to the Jawbone® Speaker. Such actions could result in electric shock.
- Clean the Jawbone® Speaker only with a dry cloth.
- Do not expose your Jawbone® Speaker to extremely high or low temperatures.
- Do not leave your Jawbone® Speaker in direct sunlight for extended periods of time.
- Do not leave your Jawbone® Speaker near open flames such as cooking burners, candles, or fireplaces.
- Do not block any ventilation openings.

Battery/Charger Hazard

- Do not dispose of your Jawbone® Speaker in a fire. The battery could explode causing injury or death.
- Only charge the battery in accordance with the user instructions supplied with the Jawbone® Speaker.
- Do not attempt to disassemble the Jawbone® Speaker charger or force open the built-in battery because this may result in electric shock.
- Do not charge the Jawbone® Speaker in damp areas or in extremely high or low temperatures because this could result in electric shock.
- Do not clean the Jawbone® Speaker when it is being charged. Always unplug the charger first before cleaning the Jawbone® Speaker.

Automobile Accident Hazard

- Do not leave or store the Jawbone® Speaker or any of its accessories near or over your automobile's air bag because serious injury may result when an air bag deploys.

Fall Hazard

- Do not place the Jawbone® Speaker on high surfaces such as shelves. During music playback the Jawbone® Speaker may move which could cause the Jawbone® Speaker to shift and fall off of the edge.

CAUTION

- Do not use abrasive cleaners to clean your Jawbone® Speaker because this could cause scratches and damage.
- Do not bring your Jawbone® Speaker in to contact with any sharp objects because this could cause scratches and damage.
- Do not insert anything into your Jawbone® Speaker unless otherwise specified in the user instructions. This may damage the internal components.
- Do not attempt to repair, modify, or disassemble your Jawbone® Speaker yourself, it does not contain any user-serviceable components.
- Do not attempt to replace your Jawbone® Speaker battery, it is built-in and is not changeable.
- Use only the manufacturer supplied charger to charge your Jawbone® Speaker. Other chargers may look similar, but using them could result in electric shock and could damage the Jawbone® Speaker.
- Observe all signs and displays that require an electrical device or RF radio product to be switched off in designated areas.
- Turn off your Jawbone® Speaker prior to boarding an aircraft. Do not use the Jawbone® Speaker inside an aircraft unless allowed by your airline.
- Dispose of the Jawbone® Speaker and the Jawbone® Speaker's battery in accordance with local regulations. Do not dispose of the battery with regular household waste.

FCC STATEMENT This equipment has been tested and found to comply with the limits for a Class B digital device, pursuant to Part 15 of the FCC Rules. These limits are designed to provide reasonable protection against harmful interference in a residential installation. This equipment generates, uses, and can radiate radio frequency energy and, if not installed and used in accordance with the instructions, may cause harmful interference to radio communications. However, there is no guarantee that interference will not occur in a particular installation. If this equipment does cause harmful interference to radio or television reception, which can be determined by turning the equipment off and on, the user is encouraged to try to correct the interference by one of the following measures:

- Reorient or relocate the receiving antenna.
- Increase the separation between the equipment and receiver.
- Connect the equipment into an outlet on a circuit different from that to which the receiver is connected.
- Consult the dealer or an experienced radio/TV technician for help.

FCC NOTICE This device complies with Part 15 of the FCC Rules. Operation is subject to the following two conditions:

1. This device may not cause harmful interference, and
2. This device must accept any interference received, including interference that may cause undesired operation.

FCC CAUTION

- Any changes or modifications not expressly approved by the party responsible for compliance could void the user's authority to operate this equipment.
- This device and its antenna(s) must not be co-located or operating in conjunction with any other antenna or transmitter.


PACKAGING AND PRODUCT DISPOSAL


Dispose of the packaging and this product in accordance with the latest provisions.

FCC ID: V3J-J2011. IC: 7589A-J2011.
To locate the FCC and IC identification numbers, please look on the underside of the Jawbone® Speaker.

Please only use with the power supply adapter provided. Jawbone model number **HDP40-145248W.**

Hereby declares that this Jawbone Bluetooth® device is in compliance with the essential requirement and other relevant provisions of Directive 1999/5/EC.

 This product is compliant with the CE directive.

 When you see this symbol on a Jawbone product, do not dispose of the product with household waste.



All returns must be made to the original place of purchase.

©2012 JAWBONE. ALL RIGHTS RESERVED. 770-00705 REV B

JAWBONE.COM